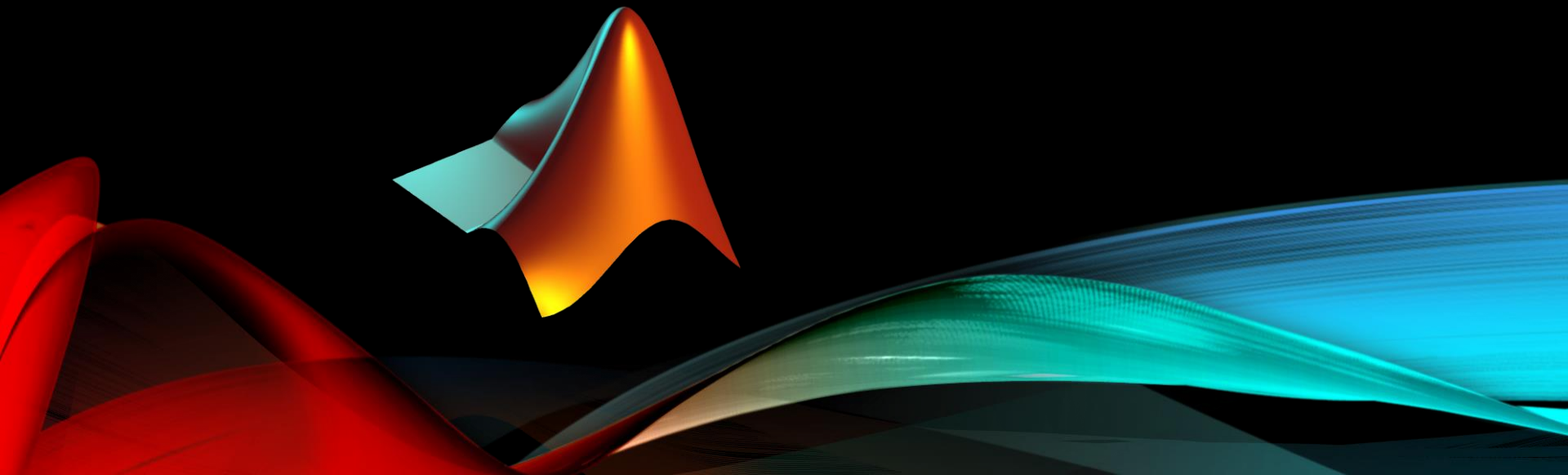


# **MATLAB R2013A INSTALLATION ON WINDOWS PLATFORM**





# OUTLINE

- System requirements
- Install MATLAB
- Open MATLAB
- MATLAB instructions and manuals

# SYSTEM REQUIREMENTS

- The latest version of the Windows XP, Windows Vista, Windows 7, or Windows 8 operating systems (32- or 64-bit)
- Intel or AMD x86 processor (support SSE2)
- 1024 MB of RAM (at least 2048 MB recommended)
- 1 GB of disk space for MATLAB only, 3 – 4 GB for a typical installation

**On April 8, 2014, Microsoft will stop supporting Windows XP and will no longer issue security patches and bug fixes for Windows XP. We strongly urge all Windows XP users to upgrade to Windows 7 or 8.1**

# INSTALL MATLAB

- The MATLAB program is very large and should only be downloaded using a high-speed Internet connection
- Download ISO image file  
<http://www.cc.ncku.edu.tw/download/matlab.htm>
- Download license file  
<ftp://140.116.249.77/Mathworks/license.dat>
- Download installation procedure
- [ftp://140.116.249.77/Mathworks/MatlabR2013A/MATLAB%202013a\\_Windows\\_install.pdf](ftp://140.116.249.77/Mathworks/MatlabR2013A/MATLAB%202013a_Windows_install.pdf)
- These websites are only accessible by using NCKU internet

# INSTALL MATLAB

## NCKU Download Center

[首頁](#) | [Windows 作業系統](#) | [Office 系列](#) | [Visual Studio 系列](#) | [Autodesk 系列](#) | [Matlab 系列](#) | [防毒軟體](#) | [其他軟體](#) | [軟體序號](#) | [聯絡我們](#)

### ● 注意事項

1. Matlab 認證伺服器 IP: 140.116.205.77  
部分說明文件內容有誤，請依此 IP 為準。


2. 手動更新認證伺服器 IP:


- (1) 已安裝 MATLAB R2007 版本的用戶請到/MATLAB路徑/bin/win32 修改License.dat，將IP改為140.116.205.77，同時27002 改為27000。
- (2) 已安裝MATLAB R2008 or R2009 版本的用戶請到/MATLAB路徑/licenses 修改network.lic，內容如下：  
SERVER 140.116.205.77 INTERNET=140.116.205.77 27000  
USE\_SERVER。

3. License.dat 下載。

**Download license file**

### ● Matlab R2013a (Windows)

 Matlab R2013a 安裝程式(ISO 影像檔\_下載點1)

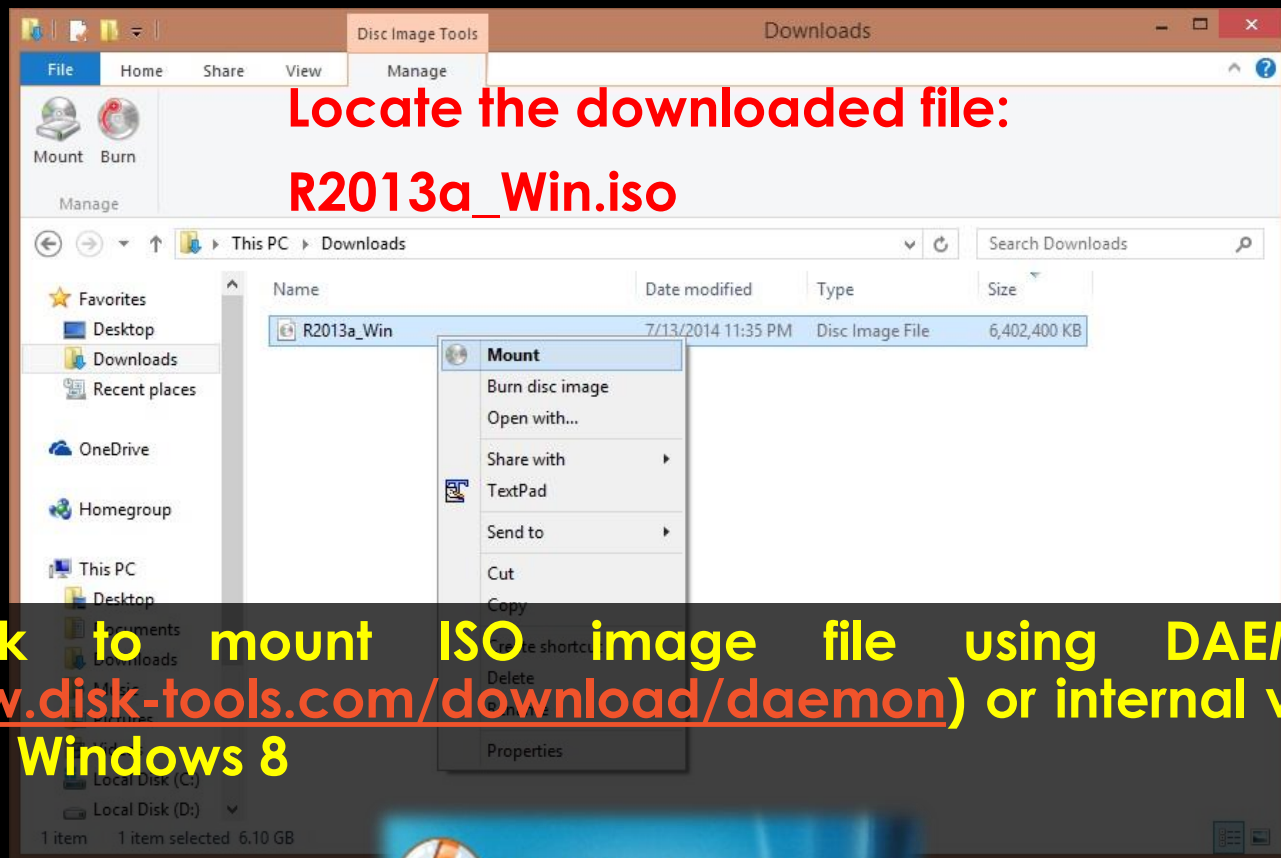
 Matlab R2013a 安裝程式(ISO 影像檔\_下載點2)

說明: Matlab R2013a 安裝說明。

**Download ISO image file**

**Download installation procedure**

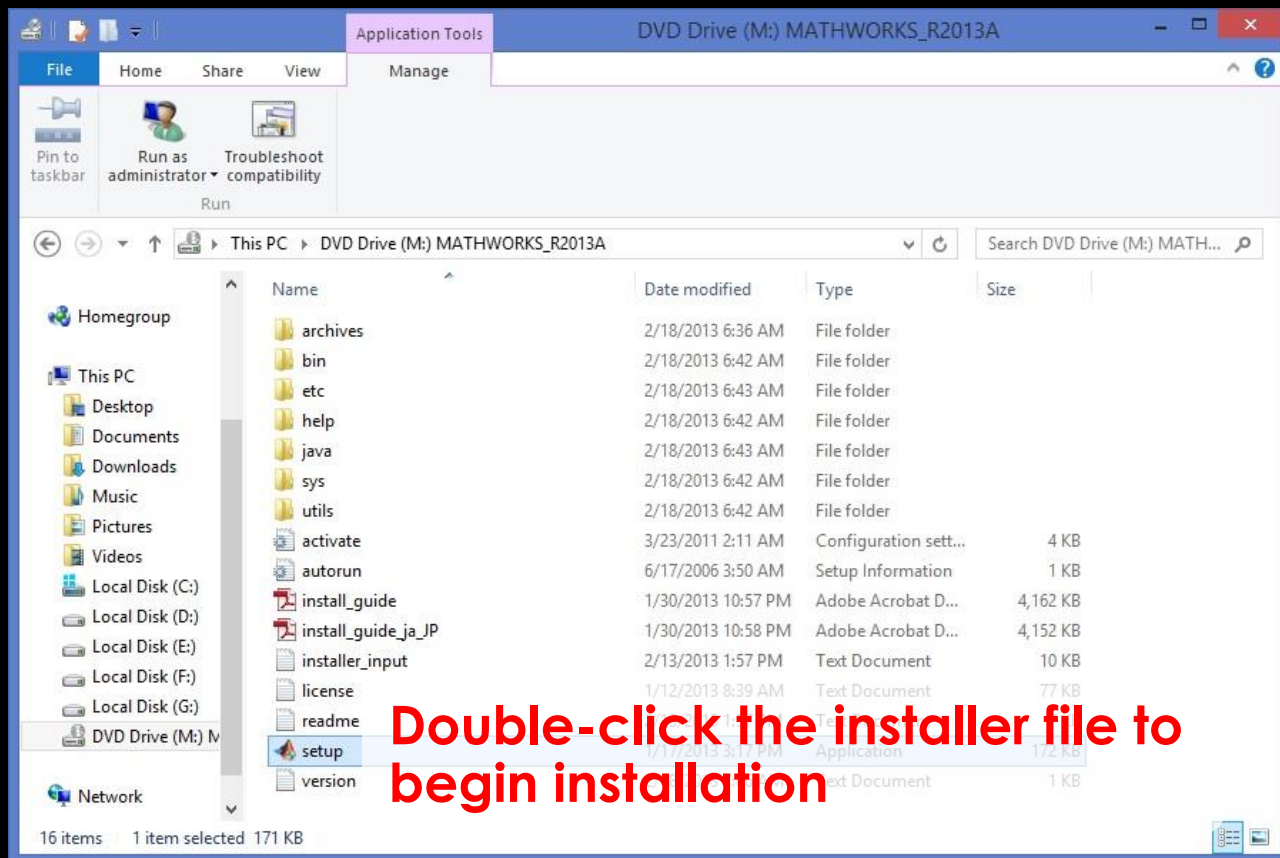
# INSTALL MATLAB



Right click to mount ISO image file using DAEMON Tools  
(<http://www.disk-tools.com/download/daemon>) or internal virtual drives  
emulator in Windows 8



# INSTALL MATLAB



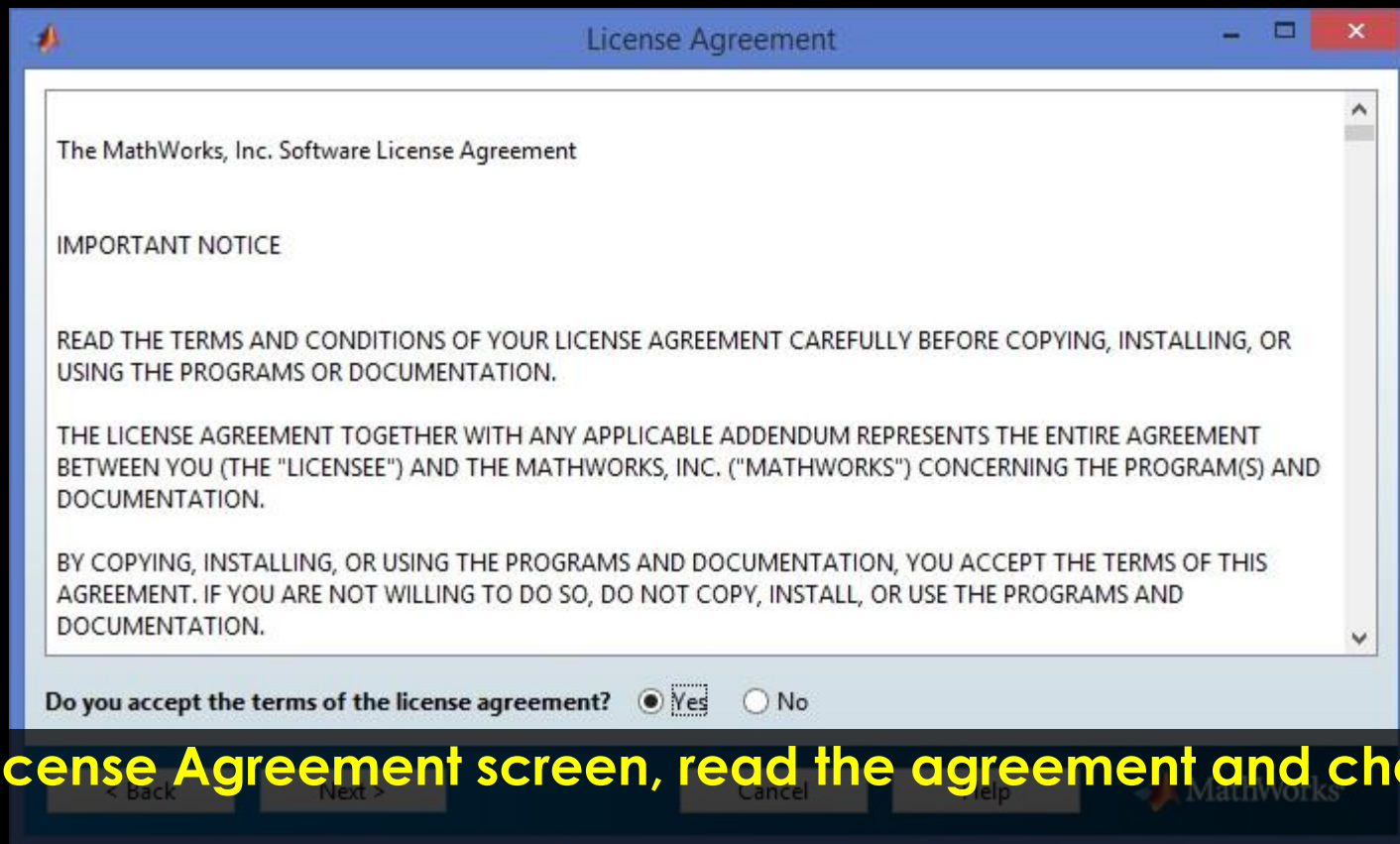


# INSTALL MATLAB



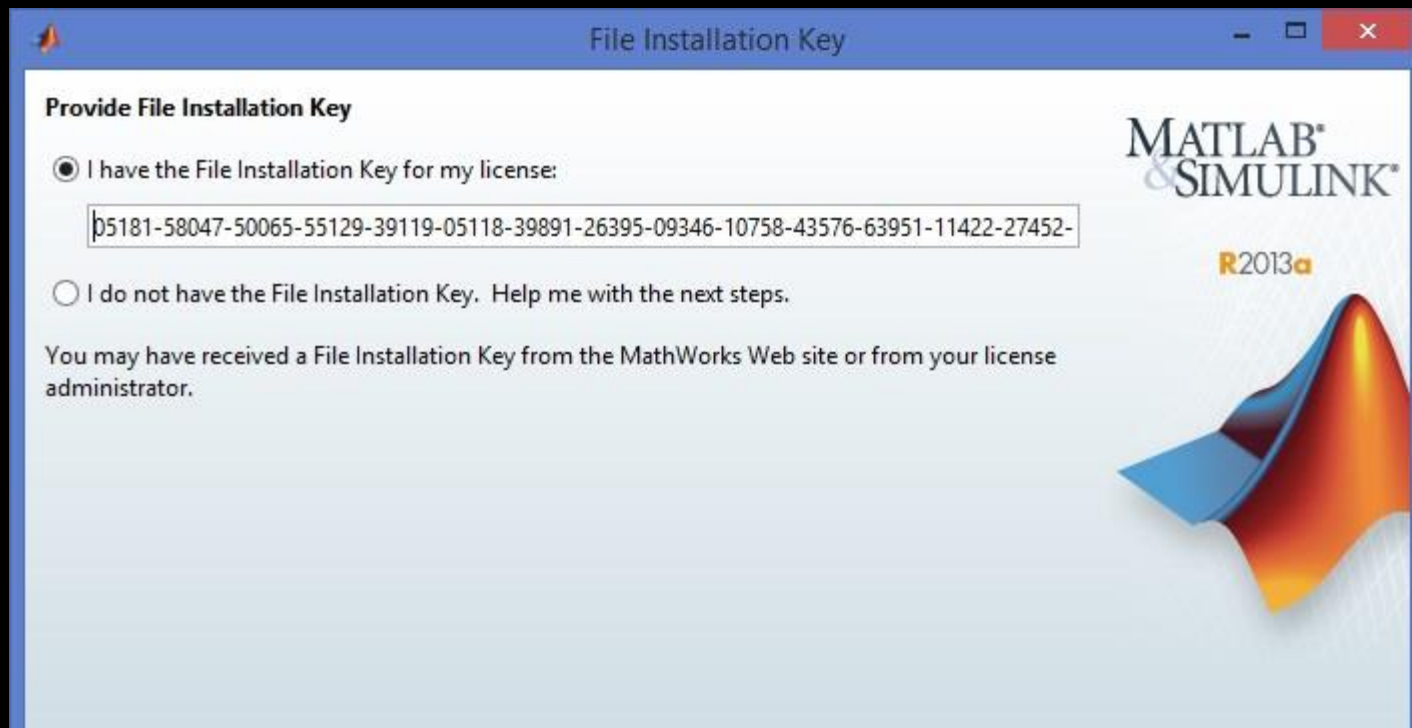


# INSTALL MATLAB



**On the License Agreement screen, read the agreement and choose Yes**

# INSTALL MATLAB



**Provide file installation key (Check MATLAB\_2013a\_Windows\_install.pdf)**

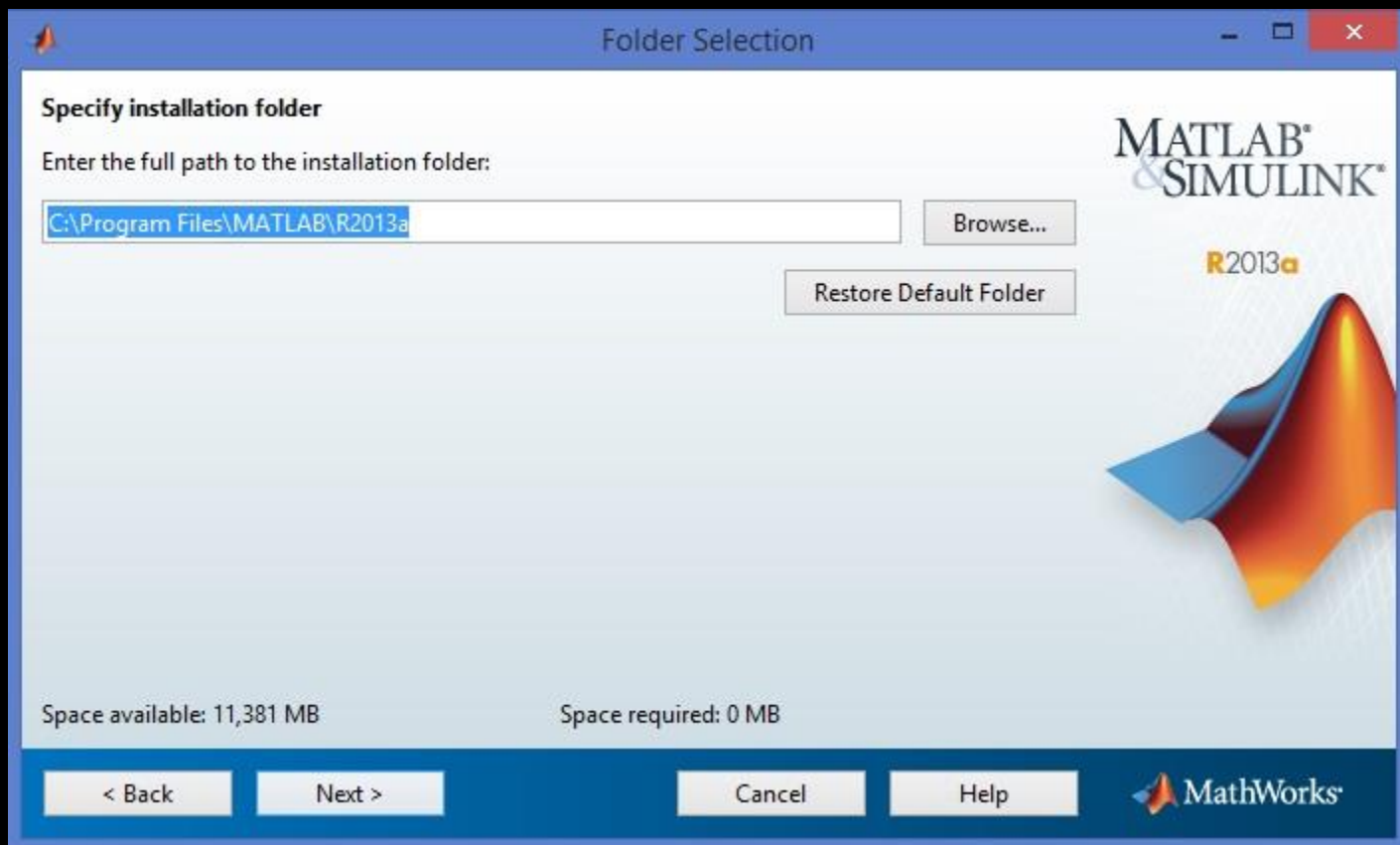
**05181-58047-50065-55129-39119-05118-39891-26395-09346-10758-  
43576-63951-11422-27452-30255-09479**

# INSTALL MATLAB

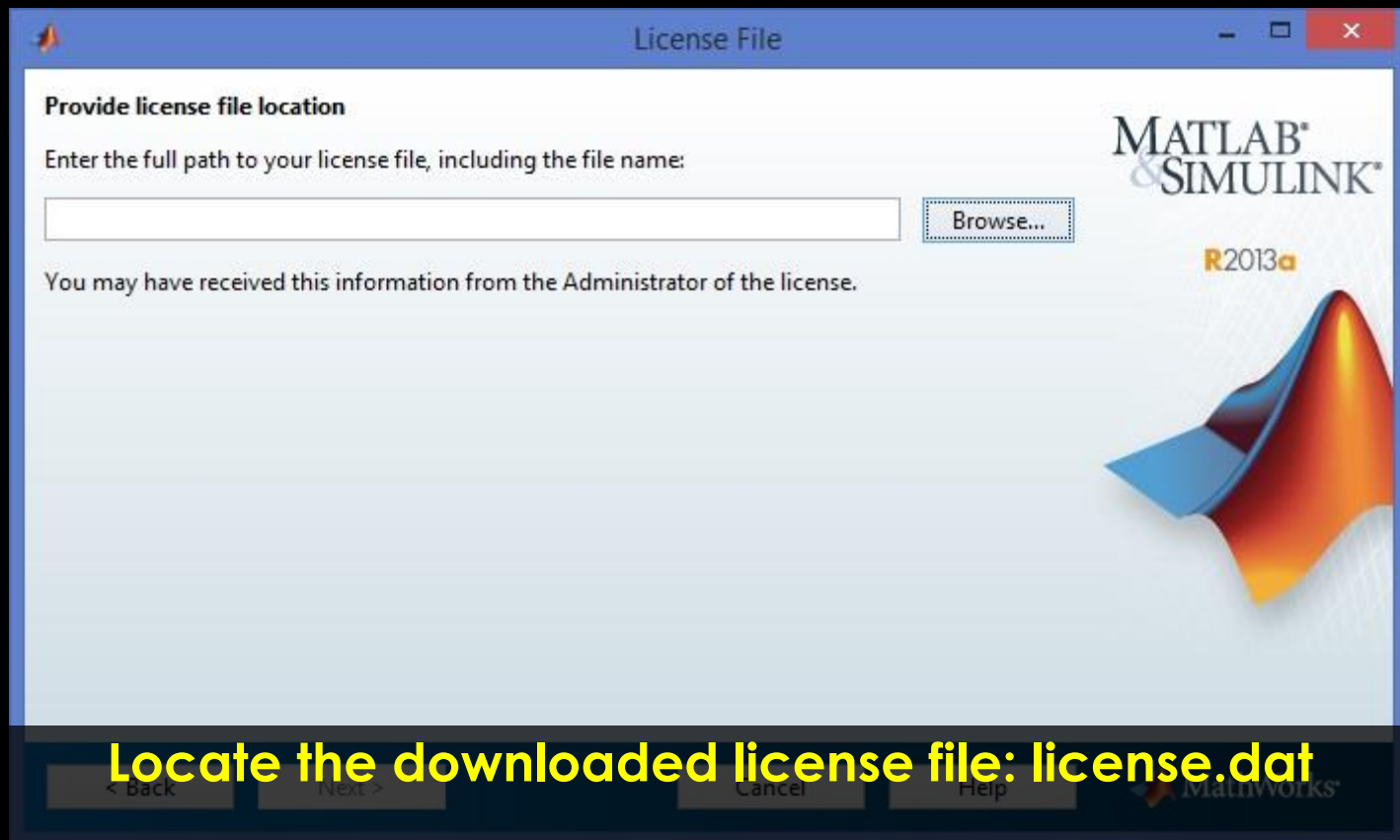


**Choose installation type**  
**Typical or Custom**

# INSTALL MATLAB



# INSTALL MATLAB



**Locate the downloaded license file: license.dat**

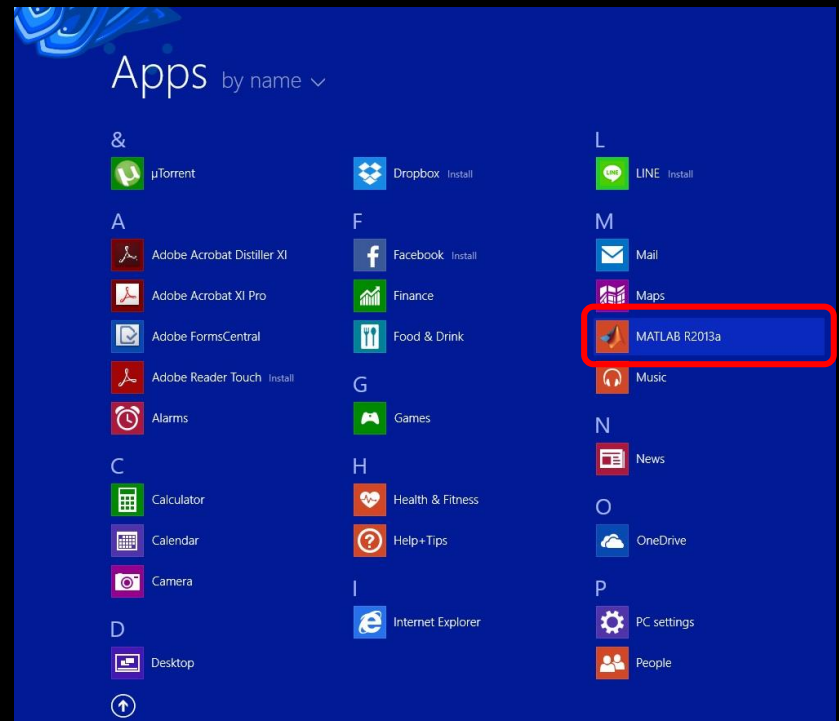
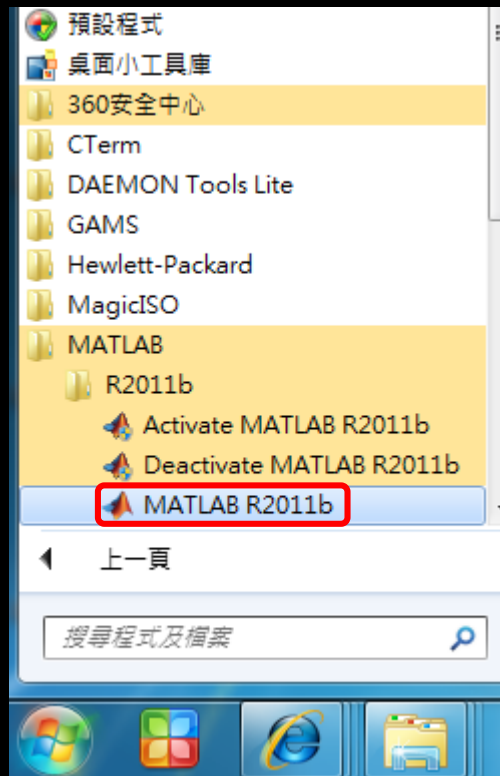
# INSTALL MATLAB



**Follow instructions in MATLAB\_2013a\_Windows\_install.pdf**

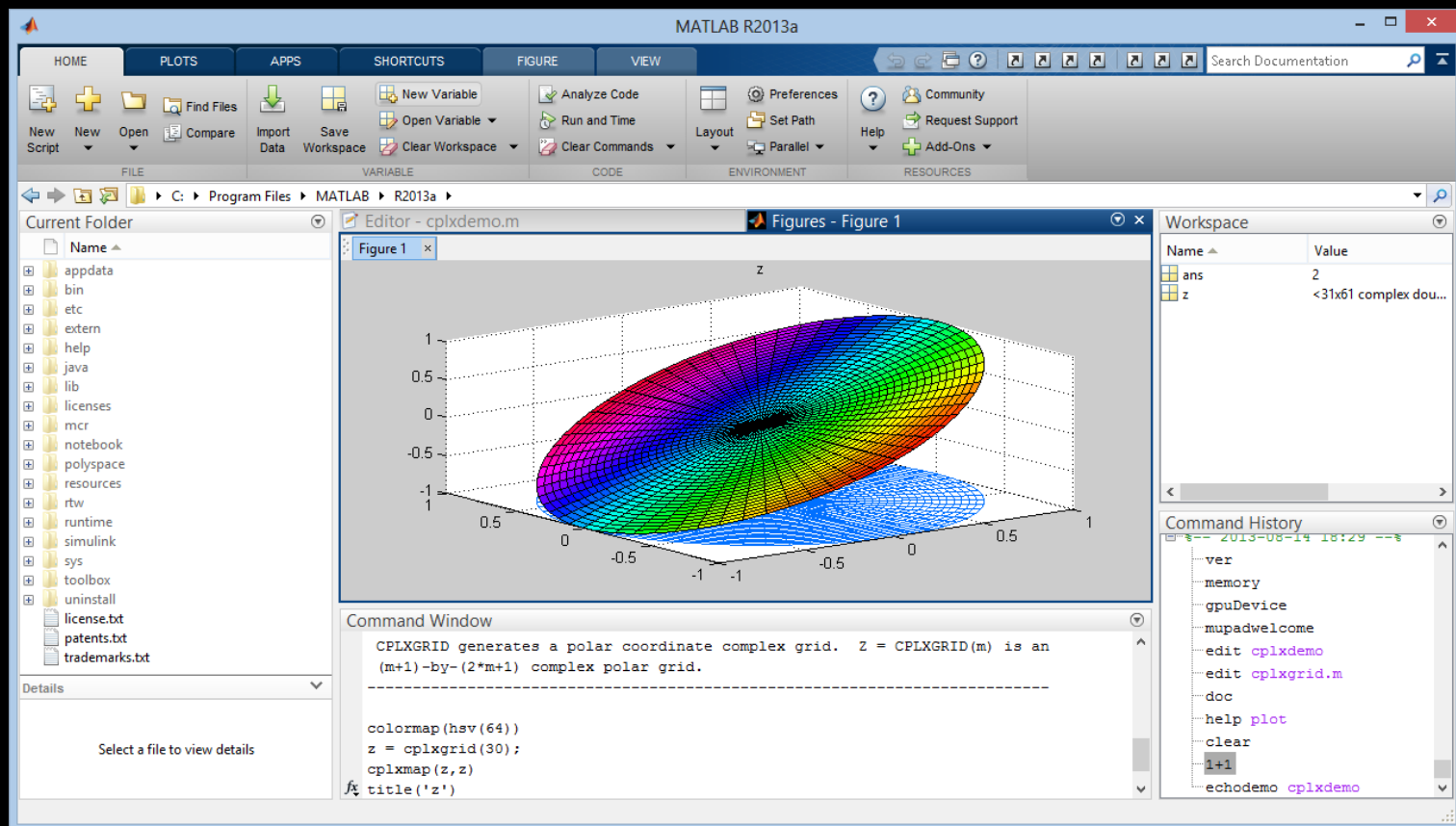


# OPEN MATLAB



**Locate MATLAB after installation**

# OPEN MATLAB



# MATLAB INSTRUCTIONS AND MANUALS

## Getting Started - MathWorks

- [www.mathworks.com/help/pdf\\_doc/matlab/getstart.pdf](http://www.mathworks.com/help/pdf_doc/matlab/getstart.pdf)

## Learning MATLAB - MathWorks

- [http://www.mathworks.com/academia/student\\_version/learnmatlab\\_sp3.pdf](http://www.mathworks.com/academia/student_version/learnmatlab_sp3.pdf)

## A Guide to MATLAB for Beginners and Experienced Users

- <http://w3.gazi.edu.tr/~balbasi/A%20Guide%20to%20MATLAB.pdf>